

COUNTRY CLUB
KASKASKIA

450 E. C.R. 300 N. • P.O. Box 273 • Arcola, Illinois 61910
 Club House (217) 254-5942 • Grounds (217) 268-3541
 Website: www.kaskaskiacountryclub.com

Established 1944



Golf and Cart Etiquette

PLEASE REPAIR ALL BALL MARKS ON GREEN, RAKE BUNKERS AND REPLACE DIVOTS.

- Keep carts on paths or in rough as much as possible
- Avoid soft turf and wet, low lying areas.
- Please make golf enjoyable for all by avoiding slow play.
- Keep carts 30 feet from greens and tees.

ALLOW FASTER PLAYERS TO PLAY THROUGH

- Members and Guests MUST sign in at Pro Shop before playing.
- Golf course etiquette and proper attire required at all times on course and club house.

NO CUT-OFFS OR TANK TOPS • COLLARED GOLF SHIRTS RECOMENDED

Local Rules

- Yardages on sprinkler heads indicate distance to center of green.
- Out of bounds defined by white stakes and by being in field on Holes #7 & #8.
- Hole #7: You may take a free drop, no closer to the hole, if your ball is in either ditch by the road. If your ball hits a wire over the road, you **MUST** hit another ball.



**DOUGLAS COUNTY
 ABSTRACT CO., INC.**
 110 E. Sale Street • Tuscola, IL 61953
 217-253-3214



Korner Cafe
 On Rt. 133 in Chesterville • 543-2457

DISTANCE MARKERS TO CENTER OF GREEN

Red 100 Yards
 White 150 Yards
 Yellow 200 Yards
 Blue 250 Yards

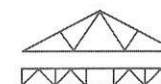
COURSE HANDICAP INFORMATION

	MEN (White)	Women (Red)
Rating	67.2	69.8
Slope	111	105

PACE OF PLAY	:12	:24	:36	:48	1:00	1:10	1:25	1:35	1:47	
HOLE	1	2	3	4	5	6	7	8	9	OUT
WHITE	334	355	355	328	326	122	490	152	401	2863
HANDICAP	7	5	3	11	9	17	15	13	1	
PAR MEN/WOMEN	4	4	4	4	4	3	5	3	4/5	35/36
RED	274	309	332	261	264	108	420	152	401	2521
HANDICAP	7	13	3	11	15	17	1	9	5	



State Bank of Arthur
 IN A GREAT COUNTRY
ARTHUR, ILLINOIS
 Member Federal Deposit Insurance Corporation
 Each Depositor Insured to \$100,000.00
 Member Federal Reserve System



OKAW TRUSS, INC.
 368 E. State Route 133 • Arthur, IL 61911
 217-543-3371

1:59	2:11	2:23	2:35	2:47	2:57	3:09	3:19	3:34					
10	11	12	13	14	15	16	17	18	IN	OUT	TOT	HCP	NET
334	355	355	328	326	122	420	217	474	2931	2863	5794		
10	8	6	14	12	18	2	4	16					
4	4	4	4	4	3	4/5	3	5	35/36	70/72			
274	309	332	261	264	108	420	152	401	2521	2521	5042		
8	14	4	12	16	18	2	10	6					

DATE:

SCORER: